

Business-to-Business Learning

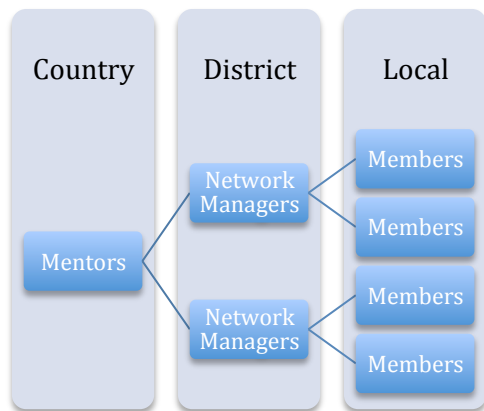
What is the business-to-business network that I am joining?

Welcome to Linking Local Learners (LLL) business to business learning network.

You are joining a group of rural entrepreneurs just like yourself. We are linked together in this network to learn from each other about new business opportunities. Everyone is learning how to make money from RAVI ventures, including Transaction Security Services (TSS).

Who are the other entrepreneurs in the network?

Like you all the other entrepreneurs have a main business: some are farmers; some are small traders; some own agro-dealer or agrovet shops; some run small agro-processing businesses. RAVI ventures add another income stream to your main business. As a member your immediate contact in the network is your local network manager, each network is supported by national mentors.



What are we learning on the Internet?

All the entrepreneurs, farmers, traders and agro-dealers, show each other how to make money from the new ventures such as TSS. For this we use an online learning application, www.my.linkinglearners.net (myLLL). Here national mentors interact with members from Kenya, Tanzania and Uganda to discuss RAVI ventures; ideas for all entrepreneurs to improve businesses. You can join any of the discussions about your venture on the learning application. This is your place on the Internet for exchanging with other businesses like yours and thus to gain experience and insights from others like you.

How do we learn?

As a member you will work with the other members managed by your local network manager. You will meet each other to brainstorm ways to make more money from the new ventures. After meetings you will try out these ideas. You can ask your network managers and mentors to assist you in these brainstorming sessions. You will learn-by-doing following the learning cycle. After trying out the ideas you must share at your meetings and with all the other learners in the network using www.my.linkinglearners.net. But for local learning to work, myLLL members must agree to follow a set of myLLL Principles and to operate using the myLLL Code of Behaviour.